

Ecostat

Thermostatic shower mixer Comfort for exposed installation

Surfaces: **chrome** Art. no. : **13116000**



Description

product features

- designed to run 1 function
- wall-mounted
- exposed design allows easy installation, all working parts are outside of the wall
- Ecostop button limits the water consumption to 10 l/min
- Maximum flow rate (at 3 bar): 17 l/min
- flow rate hand shower connection 17 l/min at 3 bar
- thermostat cartridge, ceramic valve 180°
- safety stop at 40°C
- Maximum temperature can be adjusted on installation
- Non-return valve
- Material handles: metal
- Connection type: S connections
- Centre distance: 150 mm ± 12 mm
- Min. operating pressure: 1 bar
- Max. operating pressure: 10 bar
- Noise class: I
- dirt filter included
- WRAS 1904006

Article Details

Price excl. VAT

£ 241.67

Design awards



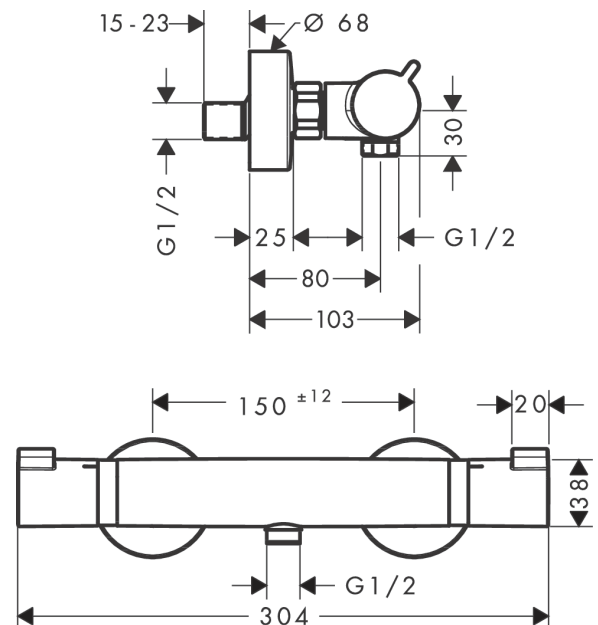
Certificates



Product image



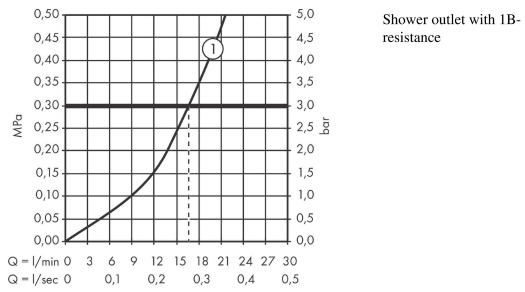
Scale drawing



Ecostat
Thermostatic shower mixer Comfort for exposed installation
 Surfaces: **chrome** Art. no. : **13116000**



Flowchart

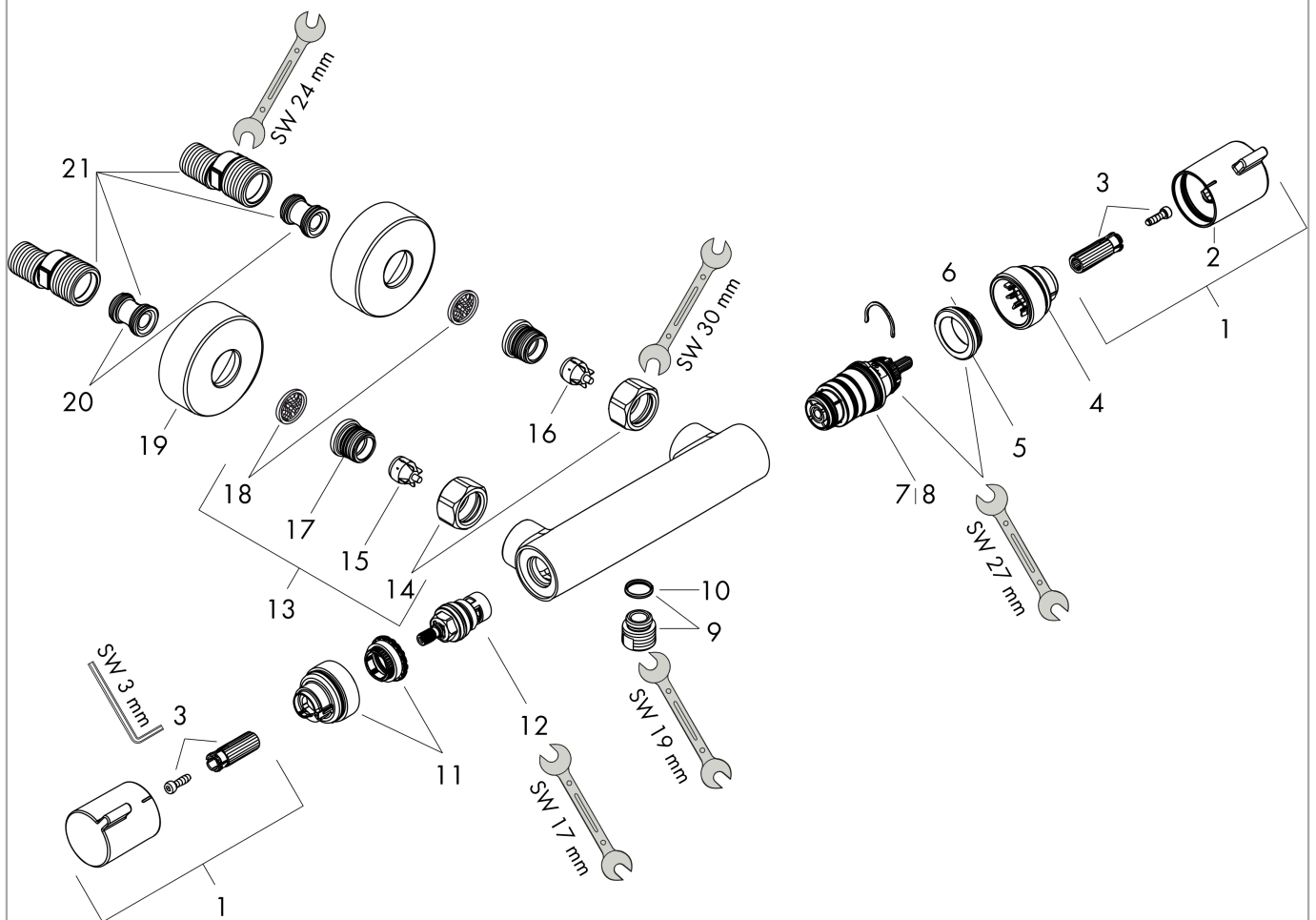


Ecostat
Thermostatic shower mixer Comfort for exposed installation
 Surfaces: **chrome** Art. no. : **13116000**



Exploded Drawing

Year of production: >07/12



Ecostat

Thermostatic shower mixer Comfort for exposed installation

Surfaces: **chrome** Art. no. : **13116000**



Spare part list

Year of production: >07/12

Pos.	Description	Art. no.	Price	PU
1	handle	95836000	-	1
2	pushbutton	92848000	-	1
3	handle fixing set	95843000	-	1
4	safety set	95839000	-	1
5	nut	98913000	-	1
6	O-ring 26x1,5	98390000	-	1
7	thermostat cartridge	98282000	-	1
8	cartridge for exchanged connections	92373000	-	1
9	connecting thread	95392000	-	1
10	O-ring 14x2	98129000	-	1
11	safety set	95841000	-	1
12	shut off unit	94149000	-	1
13	set of unions	94285000	-	1
14	set of nuts	96157000	-	1
15	non return valve (pressure-resistant up to 2 MPa)	93136000	-	1
16	non return valve	96737000	-	1
17	O-ring 17x1,5	98137000	-	1
18	filter packing	96922000	-	1
19	escutcheon Ø 68 mm	96467000	-	1
20	noise reduction	96429000	-	1
21	set of S-unions (±12 mm)	94140000	-	1
a	set of S-unions (±32 mm)	98592000	-	1
b	brake disc	92469000	-	1