

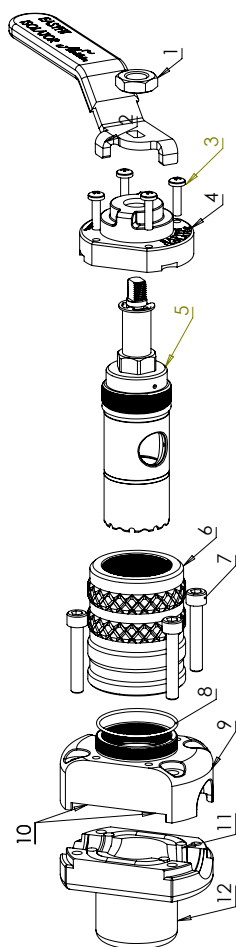
Essential Kit
for Plumbers!

Aladdin
Products

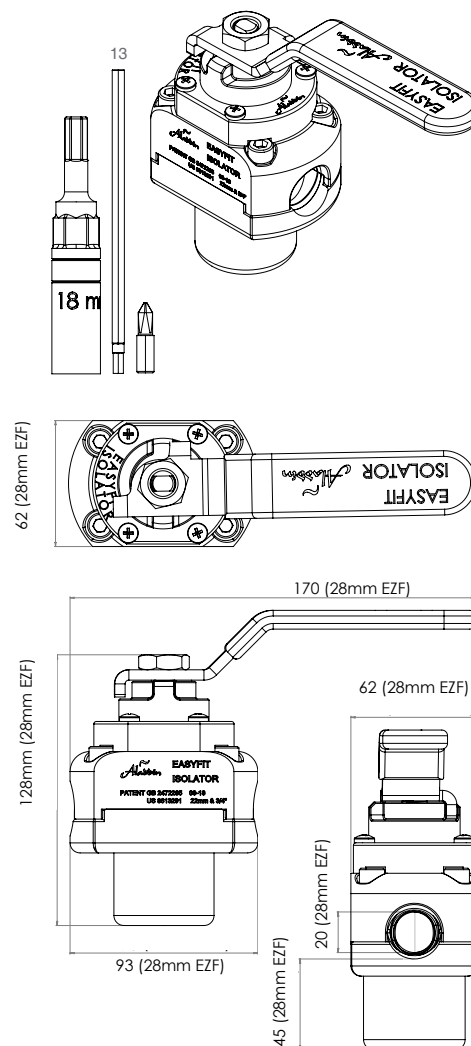


Aladdin EasyFit Isolator 28mm & 1”(UK): The Quick-fit Plumbing Isolation Valve for Pressurised Pipe

The Aladdin EasyFit Isolator clamps directly onto live pressurised pipe (hot or cold), safely providing a full bore, permanent stopcock, no need to restrict services or freeze pipes.



28mm & 1”(UK) Aladdin EasyFit Isolator		
Item No.	Descriptions & Materials (WRAS Approved EPDM Seals)	No. Units
1	M10 x 1.5 Hex Half Nut (Stainless Steel)	1
2	Red and Blue Handle	2
3	M5 x 16 Thread Forming Screws	4
4	Polyacetal Plastic Cap	1
5	Plug Assembly - High Tensile Brass Plug CZ114, Nitrile Boot EPDM Shore 70, O-ring 10mm id x 3cs Nitrile Shore 70, O-ring 37mm id x 2cs Nitrile Shore 70, Chrome Plated CZ114 Spindle, Polytube, Stainless Steel Circlip, D3 Tool Steel Blade	1
6	Collar - Aluminium 2011 Disposable Collar	1
7	M8 x 45mm Socket Cap Screws BZP	4
8	Oring 46mm id x 2 Nitrile Shore 70	1
9	Upper Housing 304 Stainless Steel	1
10	Half O-Ring Gaskets EPDM Shore 70	2
11	Lower Gasket EPDM Shore 70	1
12	Lower Housing 304 Stainless Steel	1
13	Tool Kit - Tool Steel Long Socket, Tool Steel Hex Socket Driver Bit, Tool Steel Pozi Driver Bit	1



Aladdin EasyFit Isolator

28mm & 1”(UK): Pipe Specification

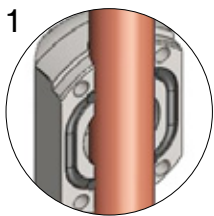


28mm EasyFit are also suitable for BS695 Imperial pipe

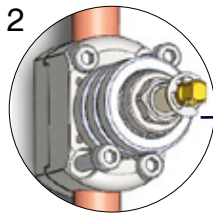
Aladdin EasyFit Isolator Specification	Copper BS2871 - EN1057	Copper BS2871 - EN1057	Plastic BS 7291
28mm & 1” (Range 28.0mm - 28.6mm) Aladdin EasyFit Isolator WRAS Approved - On Sale Now!			
	0.9 wall thickness	1.2 wall thickness	
Max Operating Pressure	16 bar	16 bar	6 bar
Max Operating Temperature	85 deg. C	85 deg. C	82 deg. C
Manufacturers Warranty	10 yr	10 yr	5 yr
Pipe Size	28mm	28mm	28mm
Pipe Cutting force	38Nm	45Nm	30Nm
Max Static Pressure Installs at	16 bar	16 bar	10 bar
Max Dynamic Pressure Installs at	3 bar at 40 lit/min	3 bar at 40 lit/min	3 bar at 40 lit/min

EasyFit Isolator - Quick Guide

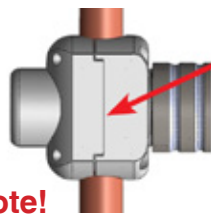
Read full instructions before installing (Enclosed with purchase)



1 Rotate Lower Housing onto pipe

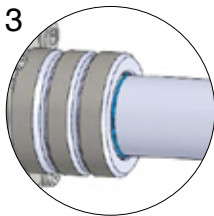


2 Clamp Housing using x 4 Bolts

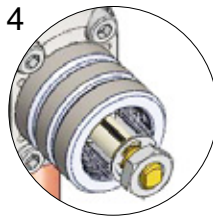


Note!
Hosing halves must be completely flush on both sides. The gasket may extend from the gap.

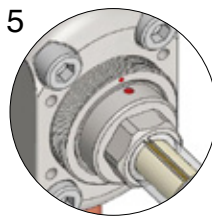
Installation Video



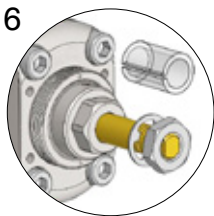
3 With Socket on Drill in low gear, drive down to the blue Reference Line



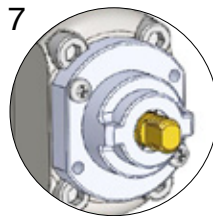
4 Remove Collar



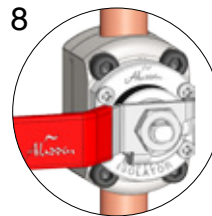
5 Align Red Dots



6 Remove Polytube (NOT CIRCLIP)



7 Fit Plastic Cap & Handle



8 Isolated!



Aladdin EasyFit Isolator 28mm & 1”(UK)
Product Code:

EZF09 Starter Pack includes Tool Kit
EZF07 Refill Pack
EZF08 Tool Kit

Aladdin EasyFit Isolator Approvals:

WRAS 2007370
KIWA 2007735

Aladdin EasyFit Isolator Product Dimensions:

128mm(H), 93mm(L), 62mm(D), 2.850Kg

Packaging Dimensions and Weight:

EZF09: 220mm(H), 220mm(L), 55mm (D), 3.095Kg

EZF07: 220mm(H), 220mm(L), 55mm (D), 2.860Kg

EZF08: 150mm(H), 30mm (L), 30mm (D), 0.235Kg

Packaging Materials:

Cardboard Carton, Foam Insert,
Full Colour Folded Paper Instructions.

SINGLE USE ONLY

MUST BE installed using the re-usable Aladdin Tool Kit

Essential Kit
for Plumbers!

