

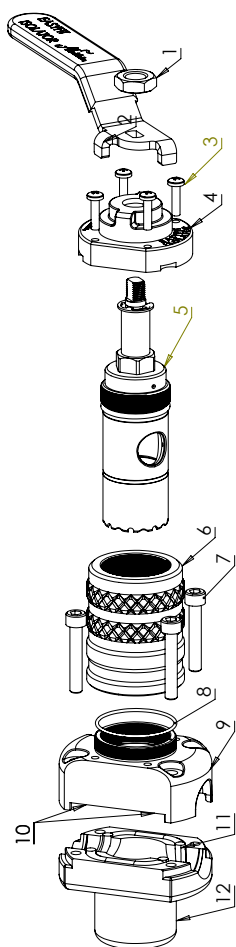
Essential Kit
for Plumbers!

Aladdin
Products

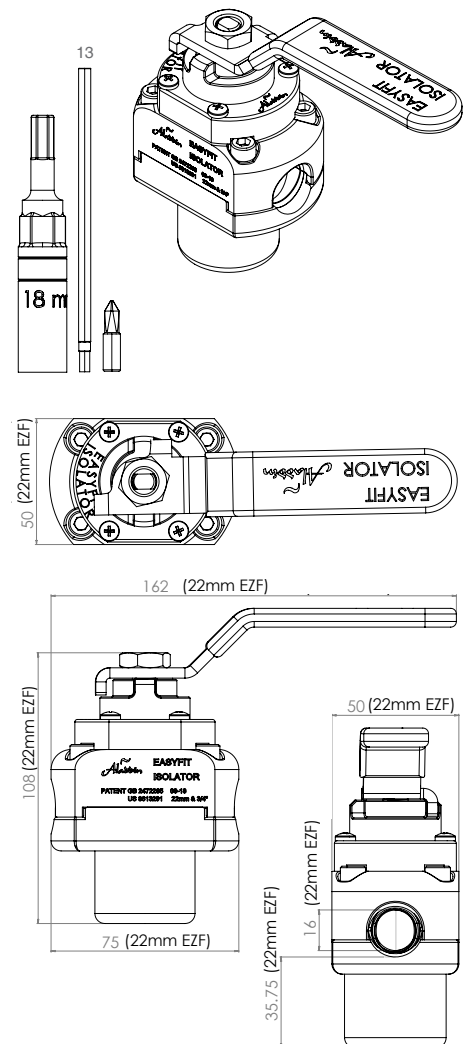


Aladdin EasyFit Isolator 22mm & 3/4" (UK): The Quick-fit Plumbing Isolation Valve for Pressurised Pipe

The Aladdin EasyFit Isolator clamps directly onto live pressurised pipe (hot or cold), safely providing a full bore, permanent stopcock, no need to restrict services or freeze pipes.



| 22mm & 3/4" (UK) Aladdin EasyFit Isolator | | |
|---|--|-----------|
| Item No. | Descriptions & Materials (WRAS Approved EPDM Seals) | No. Units |
| 1 | M10 x 1.5 Hex Half Nut (Stainless Steel) | 1 |
| 2 | Red and Blue Handle | 2 |
| 3 | M4 x 16 Thread Forming Screws (22mm Model) | 4 |
| 4 | Polyacetal Plastic Cap | 1 |
| 5 | Plug Assembly - High Tensile Brass Plug CZ114, Nitrile Boot EPDM Shore 70, O-ring 10mm id x 3cs Nitrile Shore 70, O-ring 30mm id x 2cs Nitrile Shore 70, Chrome Plated CZ114 Spindle, Polytube, Stainless Steel Circlip, D3 Tool Steel Blade | 1 |
| 6 | Collar - Aluminium 2011 Disposable Collar | 1 |
| 7 | M6 x 40mm high tensile (12.9) Socket Cap Screws | 4 |
| 8 | O-ring 37mm id x 1.5 Nitrile Shore 70 | 1 |
| 9 | Upper Housing 304 Stainless Steel | 1 |
| 10 | Half O-Ring Gaskets EPDM Shore 70 | 2 |
| 11 | Lower Gasket EPDM Shore 70 | 1 |
| 12 | Lower Housing 304 Stainless Steel | 1 |
| 13 | Tool Kit - Tool Steel Long Socket, Tool Steel Hex Socket Driver Bit, Tool Steel Pozi Driver Bit | 1 |



Aladdin EasyFit Isolator

22mm & 3/4" (UK): Pipe Specification

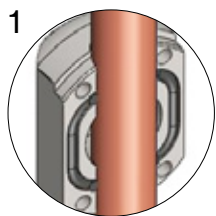


22mm EasyFit are also suitable for BS695 Imperial pipe

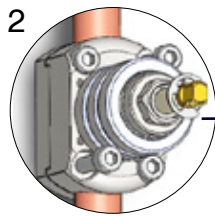
| Aladdin EasyFit Isolator Specification | Copper BS2871 - EN1057 | Copper BS2871 - EN1057 | Plastic BS 7291 |
|--|------------------------|------------------------|---------------------|
| 22mm & 3/4" (Range 21.5mm - 22.2mm) Aladdin EasyFit Isolator WRAS Approved - On Sale Now! | | | |
| | 0.9 wall thickness | 1.2 wall thickness | |
| Max Operating Pressure | 16 bar | 16 bar | 6 bar |
| Max Operating Temperature | 85 deg. C | 85 deg. C | 82 deg. C |
| Manufacturers Warranty | 10 yr | 10 yr | 5 yr |
| Pipe Size | 22mm & 3/4" | 22mm | 22mm |
| Pipe Cutting Force | 30Nm | 38Nm | 20Nm |
| Max Static Pressure Installs at | 16 bar | 16 bar | 10 bar |
| Max Dynamic Pressure Installs at | 3 bar at 40 lit/min | 3 bar at 40 lit/min | 3 bar at 40 lit/min |

EasyFit Isolator - Quick Guide

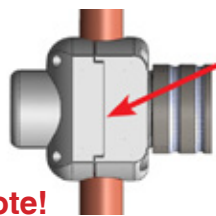
Read full instructions before installing (Enclosed with purchase)



1 Rotate Lower Housing onto pipe



2 Clamp Housing using x 4 Bolts

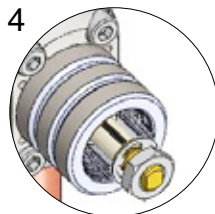


Note!
Hosing halves must be completely flush on both sides. The gasket may extend from the gap.

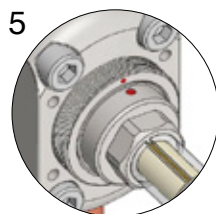
Installation Video



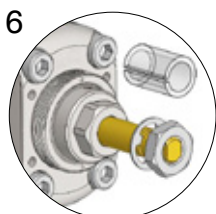
3 With Socket on Drill in low gear, drive down to the red Reference Line



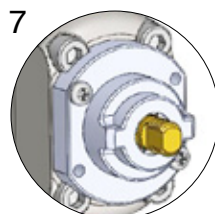
4 Remove Collar



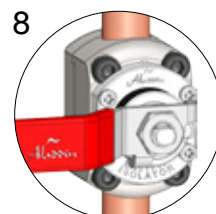
5 Align Red Dots



6 Remove Polytube (NOT CIRCLIP)



7 Fit Plastic Cap & Handle



8 Isolated!

SINGLE USE ONLY

MUST BE installed using the re-usable Aladdin Tool Kit

Aladdin EasyFit Isolator 22mm & 3/4" (UK) Product Code:

EZF06 Starter Pack includes Tool Kit
EZF04 Refill Pack
EZF05 Tool Kit

Aladdin EasyFit Isolator Approvals:

WRAS 2001357
KIWA 2001725

Aladdin EasyFit Isolator Product Dimensions:

108mm(H), 75mm(L), 50mm(D), 1.23Kg

Packaging Dimensions and Weight:

EZF06: 220mm(H), 220mm(L), 55mm (D), 1.460Kg
EZF04: 220mm(H), 220mm(L), 55mm (D), 1.250Kg
EZF05: 150mm(H), 30mm (L), 30mm (D), 0.235Kg

Packaging Materials:

Cardboard Carton, Foam Insert,
Full Colour Folded Paper Instructions.

Essential Kit
for Plumbers!

